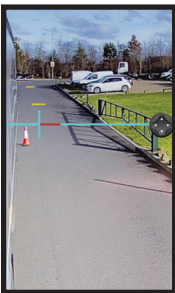
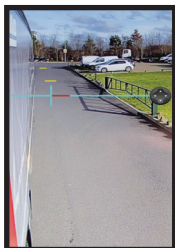


# GETTING STARTED WITH THE DAF DIGITAL VISION SYSTEM

The DAF Digital Vision System is an option consisting **of cameras outside the cab, and interior displays**. These camera systems offer an improved direct view through the windscreen and side windows, **along with improved indirect vision** to the rear in all weathers.



## On Entering the Cab

**When either door is opened both the left and right screens become active.**

The upper section is the **main view**.

The lower section is a **wide angle view**.

### At key-on all screens become active

After a few seconds a blue horizontal line appears in the left and right display - **This blue line is used to indicate the rear of the trailer.**

If you have swapped trailers the blue line needs to be adjusted to the new trailer. If not, simply press and hold the button for 2 seconds to confirm the current setting.

## Trailer Length Calibration

**Adjust the blue line by using the control button** to align with the end of the trailer. Then press either the left or right camera button on the door control panel to accept the setting.

Move the blue end of the trailer line **to the bottom corner of the trailer** and store this setting **by pressing either the left-hand or right-hand camera button**. Using a cone as a marker can assist with this, as shown.

At this stage the distance markers (overlays described later) can be moved left and right to suit your preference **by using the control button**.

You do not need to repeat this action at every key-on, only if you have swapped trailers. **However it's recommended that you acknowledge the trailer setting** by pressing either camera button before setting off.

### It is possible to adjust each side independently.

Watch this video to find out how (this is applicable **to both** the current and previous systems) [https://www.youtube.com/watch?v=R4\\_fi3CUky4](https://www.youtube.com/watch?v=R4_fi3CUky4)

## Door Control Panel

LH Camera Select

AutoPan



Heated Cameras

RH Camera Select

Camera Fold/Extend

Control Button

## Camera View Adjustment

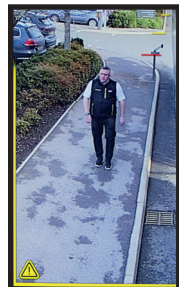


Once you've calibrated for the trailer length, **if you want to, you can adjust the horizontal and vertical view from each camera**, just as you do with the mirrors.

Once adjusted correctly the **save icon** will be displayed. **Press either left-hand or right-hand camera buttons for 2 seconds** to save the setting.



## Turn & Side Assist



**An amber warning in the nearside monitor** will display during these two conditions:

**Turn Assist Informs and warns the driver** by a continuous warning of the presence of pedestrians or cyclists next to the vehicle, and is active below 18mph. If a collision is imminent, **the driver will be warned by the amber warning blinking.**

**Side Assist informs and warns the driver** on the presence of other road users in the adjacent lane at the vehicle's co-driver side when passing or turning, **and the warning will blink when a collision is close.** Side Assist is active from stationary.

## Digital Display Overlay



To support the driver, digital display overlays are used to help you **when being overtaken or manoeuvring.**

**Red line** - the end of the trailer as set by the blue line calibration

**Yellow lines** - to help judge a safe distance to pull out ahead of an approaching vehicle

When reversing the **overlay changes to:**

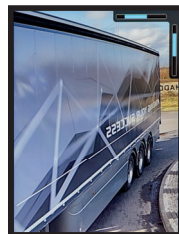
**1 green** line – clear to proceed with plenty of space if no obstacle below this line

**1 yellow** line – “almost there!”

**Red** line - the end of the trailer

**These lines can be moved left and right to suit on ‘Key-On’**

## AutoPan



The AutoPan function enables the camera view to follow the rear of the trailer whilst turning. **This function is not enabled in reverse gear.**

The AutoPan function can be activated /de-activated by **pressing the AutoPan switch on the door control panel.**

When AutoPan is selected the switch will be illuminated and will be **retained after key-off/on.**

**Autopan ‘on’** left image and **Autopan ‘off’** right image.



## ADDITIONAL FEATURES:

### Folding the Camera Arms



The camera arms can be folded in to protect them from damage when negotiating narrow spaces **and when using a drive through vehicle wash.**

**Simply press the Fold button on the Door Control Panel to fold both arms** and again to extend once through the wash.

The cameras can be folded or extended **anytime at speeds below 10mph**

Note that the camera arms cannot be folded independently.



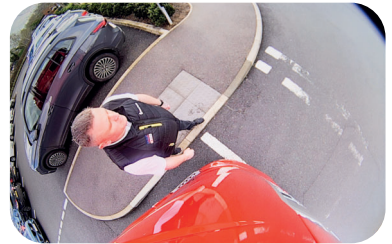
### DAF Corner View



The front view mirror and kerb view mirror can be replaced by the DAF Corner View which provides the driver with a **continuous view of cyclists, pedestrians, obstacles, and other road users** in the area to the front and nearside of the vehicle.

The camera's high sensitivity to light **provides an optimum image in low light conditions** and, if required, the camera will automatically be heated for defrosting purposes.

Check the Corner View lens for cleanliness **on your routine vehicle checks** and see below regarding cleaning.



### Cleaning the cameras



Do not clean the camera if the image is good and **do not touch the lens with your bare hands.**

If the camera does need cleaning then; spray with clean **water or glass cleaner.**

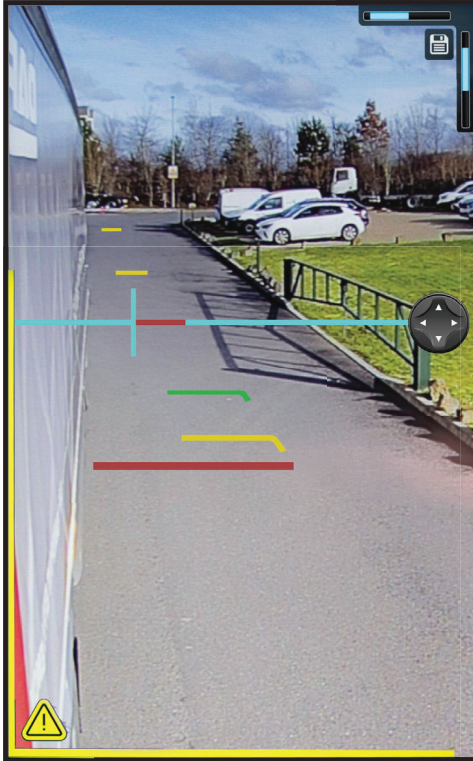
Wipe with a clean microfibre cloth.

If the lens still appears dirty then use either **Isopropyl or Ethanol** and again wipe clean with a microfibre cloth.



For further information, or if you are experiencing any problems with cleaning and maintenance of the cameras, **watch the short video** or contact your local dealer. <https://www.youtube.com/watch?v=728R0zqjXbo>

# OVERVIEW OF MONITOR OVERLAYS:



Horizontal and Vertical adjustment bars.

**The 'Save' icon must be showing** prior to saving by pressing the camera button.

End of trailer calibration and distance markers **which can be moved left and right on key-on.**

Use the control button to set the end of trailer and move the markers.

Reverse distance markers: (visual of the look only and will replace the forward markers when selecting reverse)

**Green:** Clear to move

**Yellow:** Almost there

**Red:** End of trailer

Side and Turn assist (**on nearside monitor only**) shows when obstacles and VRUs are in the vicinity.

## A Few Pointers

Here are a few useful Hints & Tips:

- 1: Always ensure cameras are folded in **when using a drive through vehicle wash.**
- 2: **Familiarise yourself with The DAF Digital Vision System** care in the DAF Driver Manual.
- 3: Monitors **will remain live for some time** once the ignition has been switched off.
- 4: Visually check the Corner View Camera (optional) is clean **and do not touch the lens with your bare hands.**
- 5: For further information refer to the **Driver's Manual.**

GET TO GRIPS QUICK

## Contact Information:

DAF Trucks Ltd, Haddenham Business Park, Pegasus Way, Haddenham, HP17 8LJ

[www.daf.co.uk](http://www.daf.co.uk)

DDVS/TM/0226